



## CABINET BASE LIGHT / CL05635CRI01

---

In the kitchen, under cabinet lighting is generally used to light up counter-top spaces or the sink areas. It makes food preparation and cooking much easier to do. Accidents, such as cutting yourself while slicing foods, are less likely to occur if you have proper cabinet lighting for your work space.



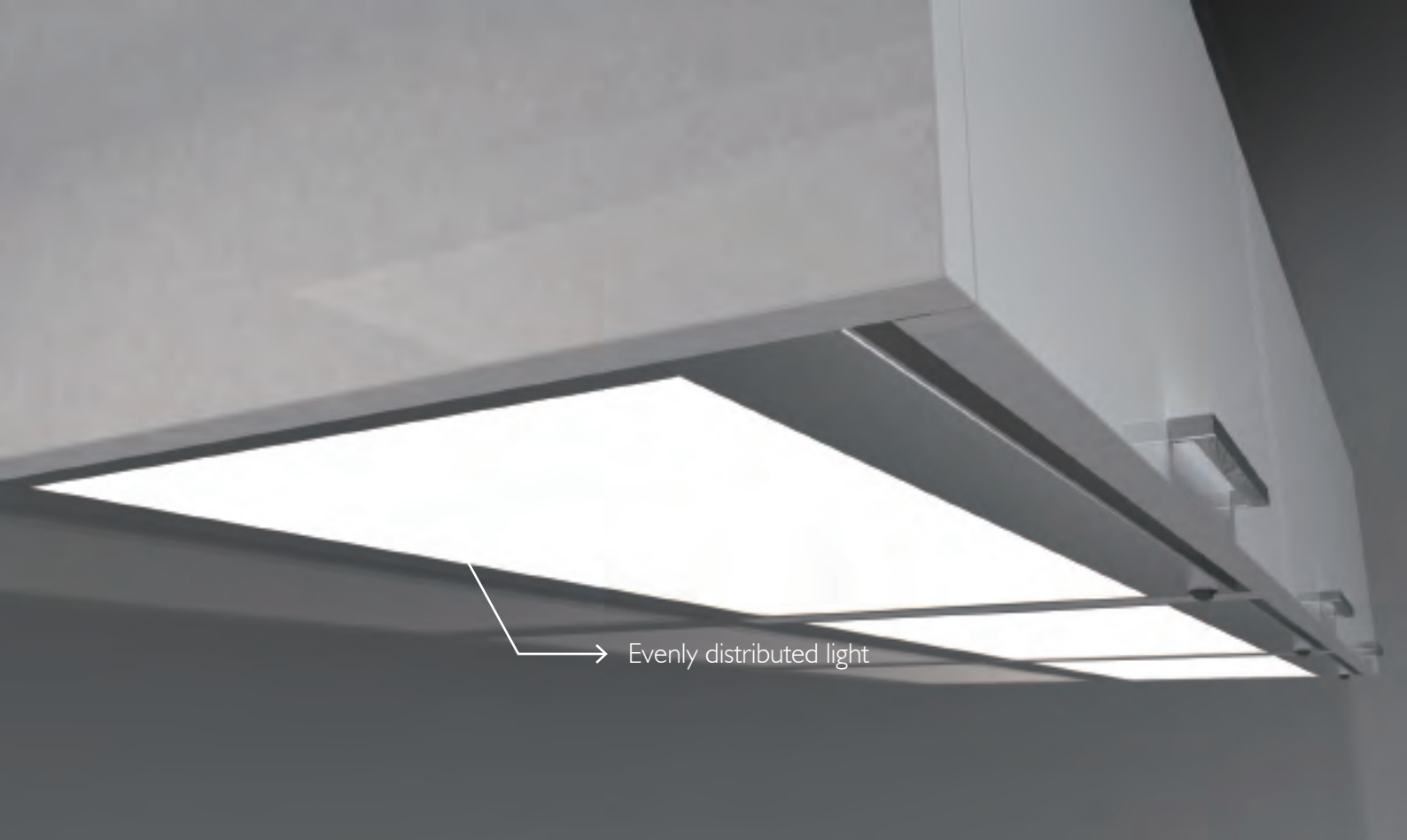
Establishes a cosy evening mood directing as well as lighting the work surface.

---

FORHOUSE Corporation  
[www.forhs.com](http://www.forhs.com)

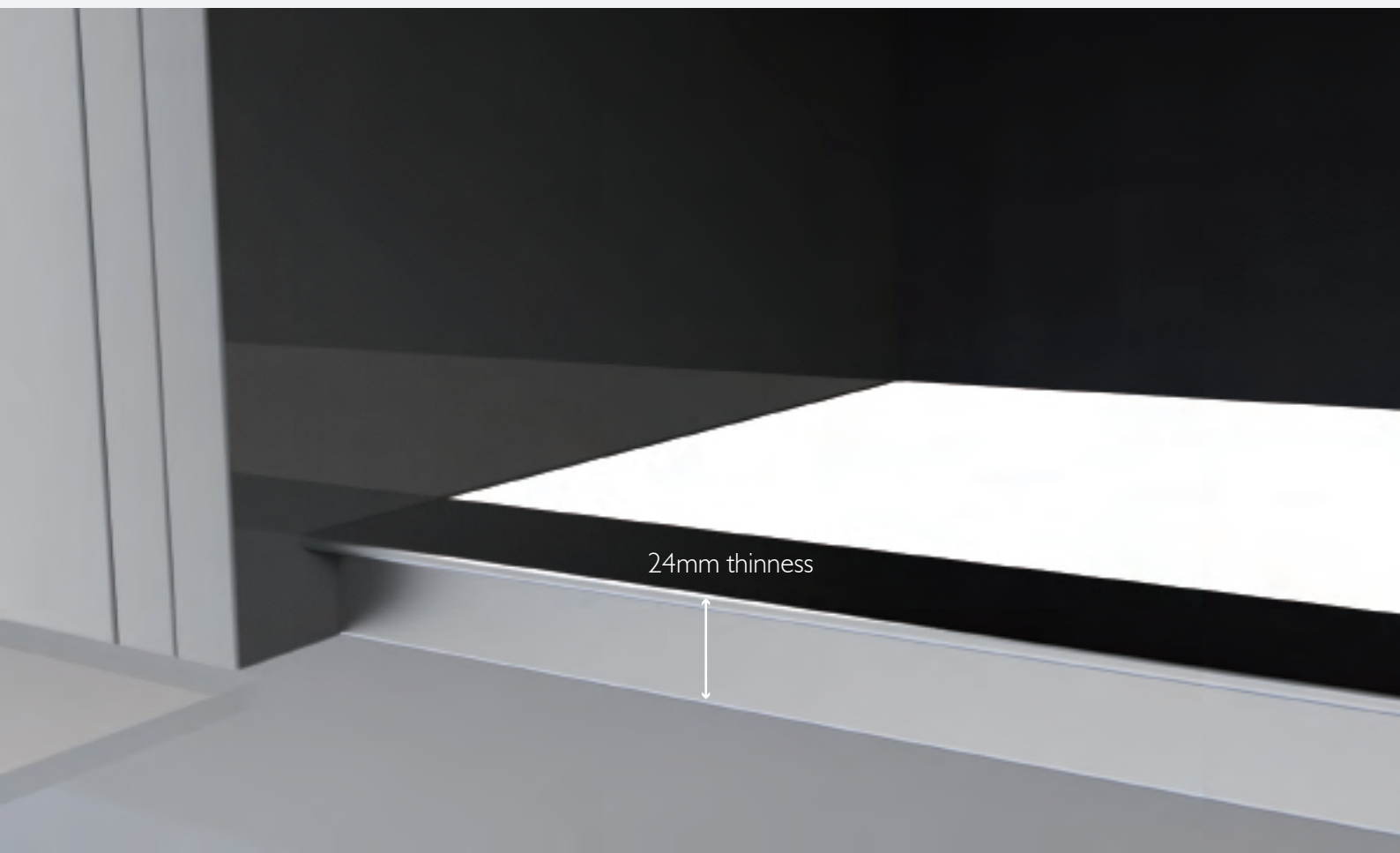
E-mail : [lighting@forhs.com](mailto:lighting@forhs.com)  
TEL: 886-4-25692188 #2122  
FAX: 886-4-25692855

Address : No.45, Lane 313, Sec. 3, Minsheng Rd. Daya Dist., Taichung City 42844 Taiwan (R.O.C.)

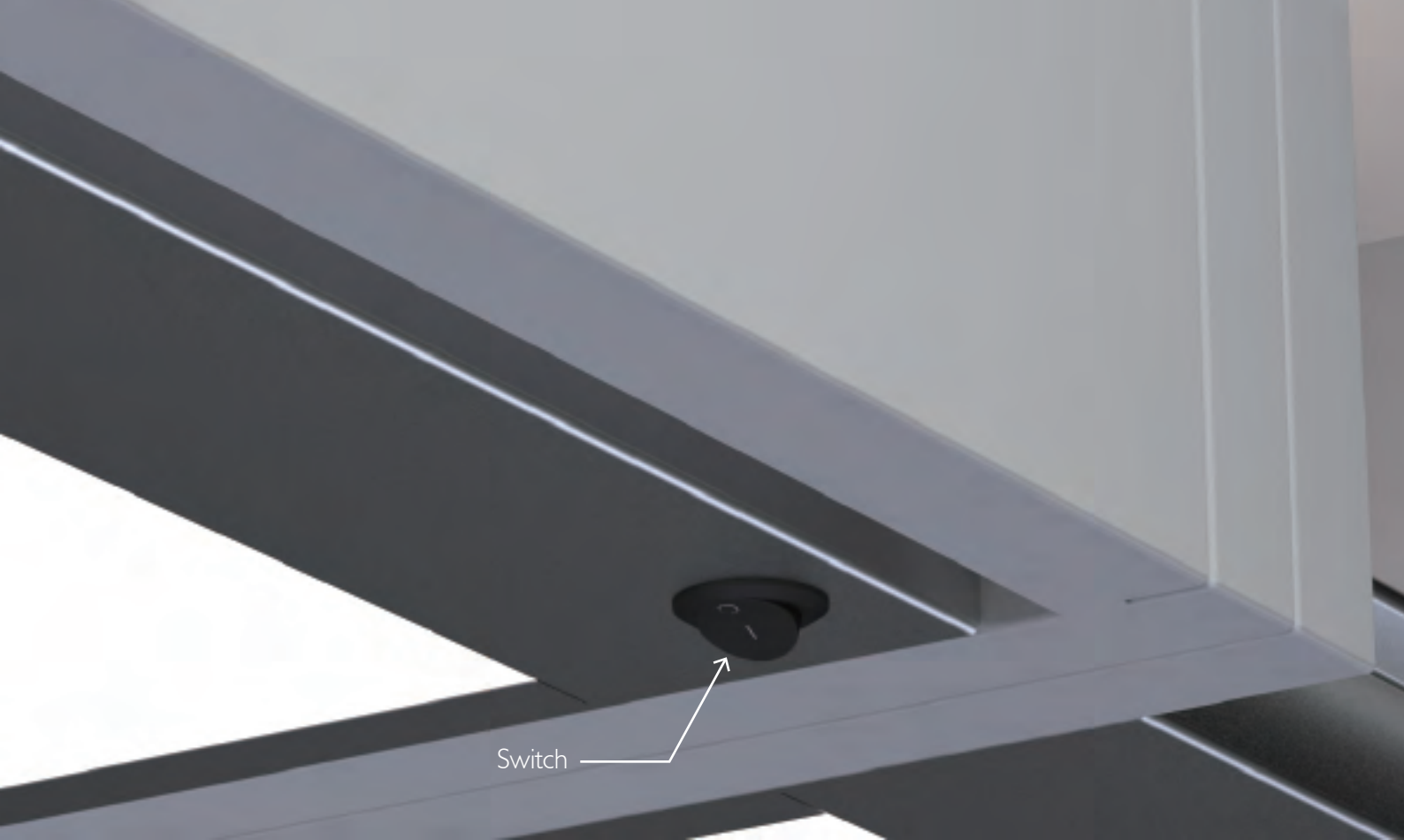


Evenly distributed light

If you want depth and contrast in your kitchen, this cabinet bottom lighting was designed for display cabinets and light up the table-top below, as well as the cabinet above. This provides great work lighting, as well as a touch of elegance.

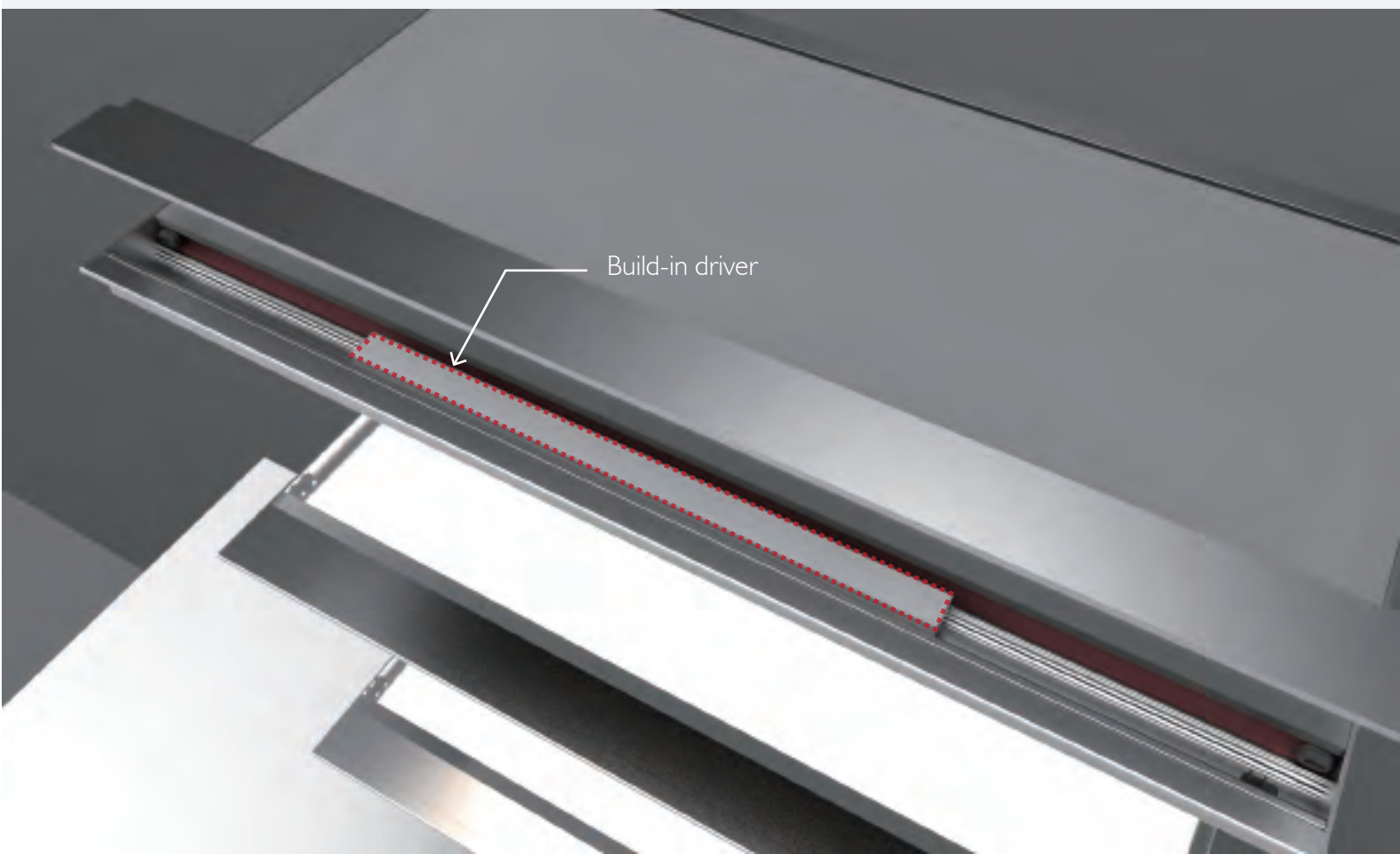


24mm thinness



Switch

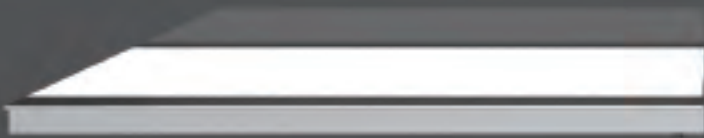
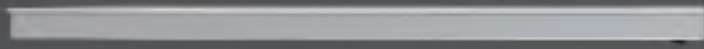
Under cabinet lighting also brings attention to your cabinets, and counter-tops, by making them more of a focal point in a room. That means, those new cabinets you had installed during the remodel will now get the attention they deserve.



Build-in driver

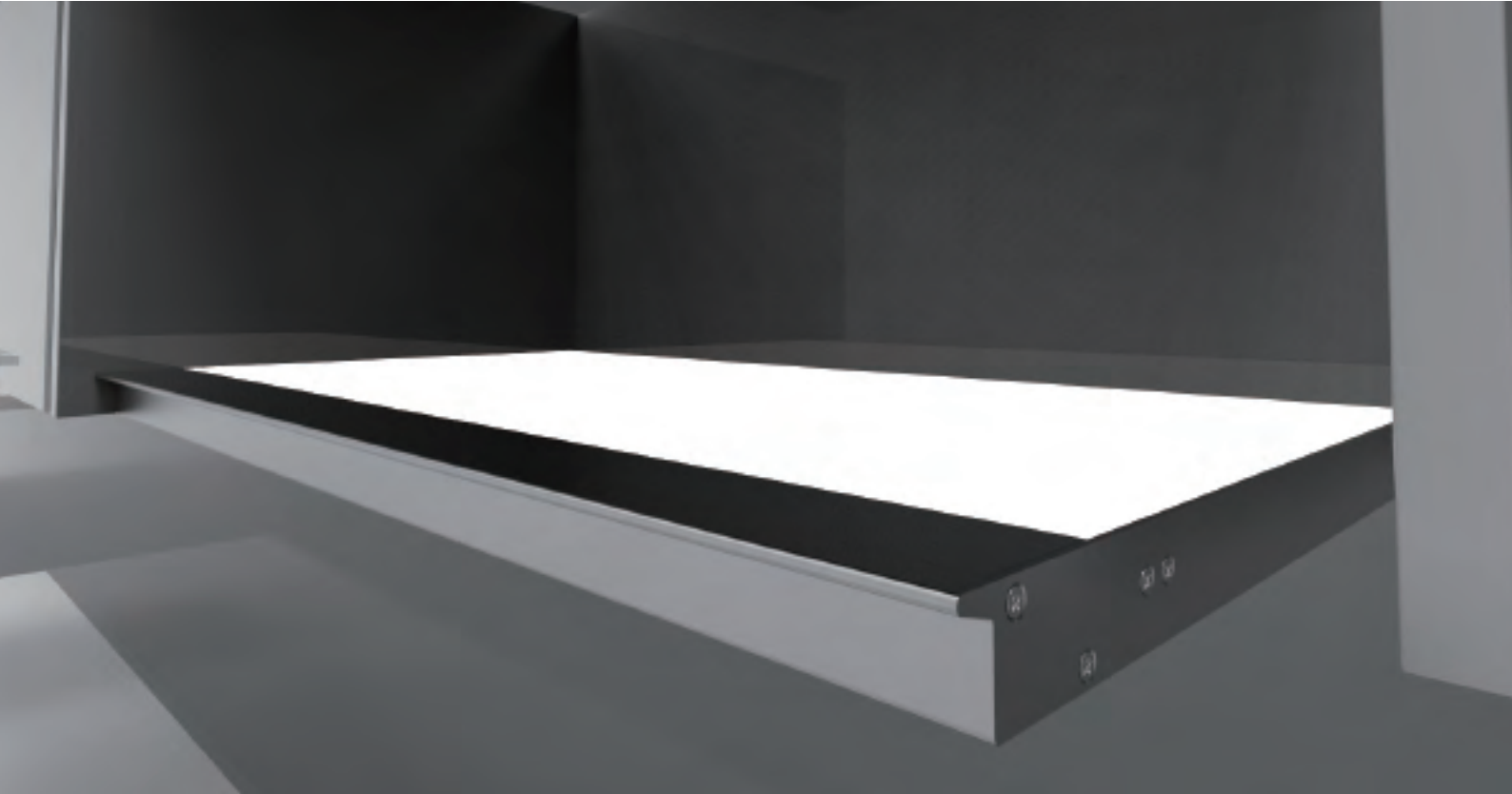


Mount on the wall



This cabinet base light is not only designed for the kitchen lighting but also can apply it to different spaces and purposes. The major advantage of this light is the flexibility and durability; it could be mounted on the wall as the book shelf, wine shelf or clothes chest layers...etc. You can also take this light as the element of interior design and it will perfectly fit into your home environment.

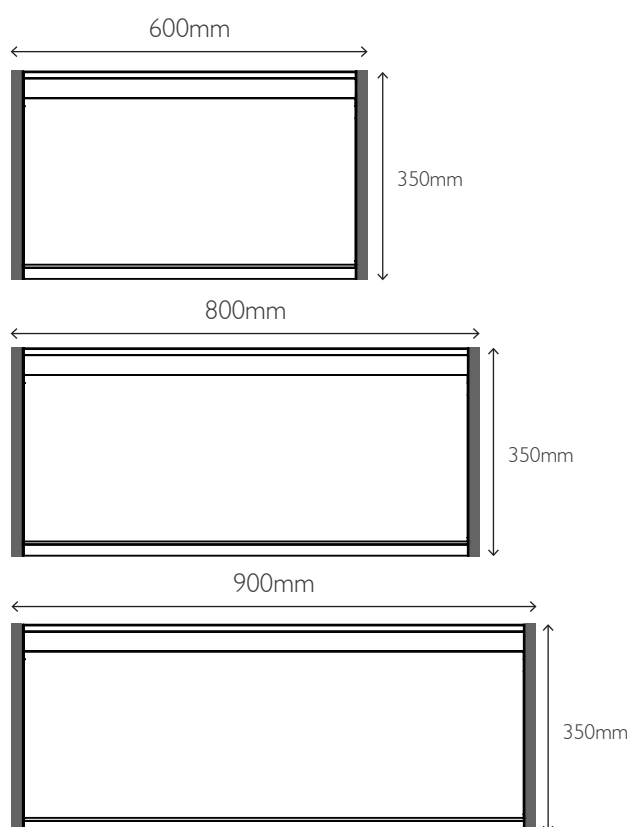




## Product Data Details

Dimension	Weight	Power	Input Voltage	CCT(WW/NW)
564mm × 350mm × 24.5mm	2 kg	15W	90-264 VAC	5700K

## Model & Size Types



## Orthographic Drawing

